

# Placitas Pipeline Facts

As of June 2016

There are 2 pipeline corridors running through the Placitas area, a north and a south right of way.

There are three pipeline operators: Enterprise subsidiary Mid-America Pipeline Co LLC, Kinder Morgan, and ERC Western Refining.

## **ERC Western Refining has one pipeline running along the southern branch in Placitas.**

Pipeline name: Tex-New Mex Pipeline

Product: Crude Oil

Diameter of pipe: 16 inch

Age: Constructed 1956

Operation Pressure: 800 psi

Max Flow Rate: 100,000 bbl per day (42 gallons per bbl)

Shutoff Valves: 2 valves, 15 miles apart, locations provided to 1st Responders

Monitoring: 2 locations monitor flow and pressure,

Other safety protocols: Cathodic protection, smart pig technology

## **Kinder Morgan has one pipeline running along the northern branch in Placitas.**

Pipeline name: Cortez Pipeline

Product: Carbon Dioxide

Diameter of pipe: ?

Age: 1984

Operating pressure: High

Flow rate: 1.3 billion cubic feet/day

Remote shutoff valves: Yes

Monitoring: Control room in Houston, air patrol bi-monthly, ground inspection frequently for built up areas

Public education, mailings and brochures

Other safety protocols: Cathodic protection, KMAP smart pig technology

**Enterprise (as Mid-America Pipeline) has 3 pipelines along the northern branch in Placitas.**

**Pipeline #1 Name:** Four Corners Lateral Loop

Product: Natural Gas Liquid (NGL) also called Highly Volatile Liquids (HVL) , eg Y-Grade. Ethane, propane, butane, and natural gasoline

Diameter of pipe: 12 inch

Age: 1995

Operating pressure: High

Flow rate: 175,000 bbl/day \*

Remote shutoff valves: Yes, both automated and manual valves, locations unknown

Monitoring: Yes, 24/7 monitoring, both automated and visually by air and ground

Public education, mailings and brochures

Other safety protocols: Cathodic protection, Inspection and cleaning pigs

**Pipeline #2 Name:** Four Corners Pipeline

Product: Natural Gas Liquid (NGL) also called Highly Volatile Liquids (HVL) , eg Y-Grade. Ethane, propane, butane, and natural gasoline

Diameter of pipe: 12 inch

Age: 1995

Operating pressure: High

Flow rate: 175,000 bbl/day \*

Remote shutoff valves: Yes, both automated and manual valves, locations unknown

Monitoring: Yes, 24/7 monitoring, both automated and visually by air and ground

Public education, mailings and brochures

Other safety protocols: Cathodic protection, Inspection and cleaning pigs

**Pipeline #3 Name:** Four Corners Lateral - White Lake to Kutz

Product: Refined Petroleum (RP), eg Gasoline, jet fuel, diesel fuel

Diameter of pipe: 8 inch

Age: 1995

Operating pressure: High

Flow rate: 60,000 bbl/day

Remote shutoff valves: Yes, both automated and manual valves, locations unknown

Monitoring: Yes, 24/7 monitoring, both automated and visually by air and ground

Public education, mailings and brochures

Other safety protocols: Cathodic protection, Inspection and cleaning pigs

The figures of 175,000 barrels per day for each of the Four Corners and Four Corners Lateral Loop pipelines is predicated upon the published figure of 350,000 barrels for both lines combined.

Online Pipeline map utilities:

Enterprise Products (as Mid-America Pipelines):

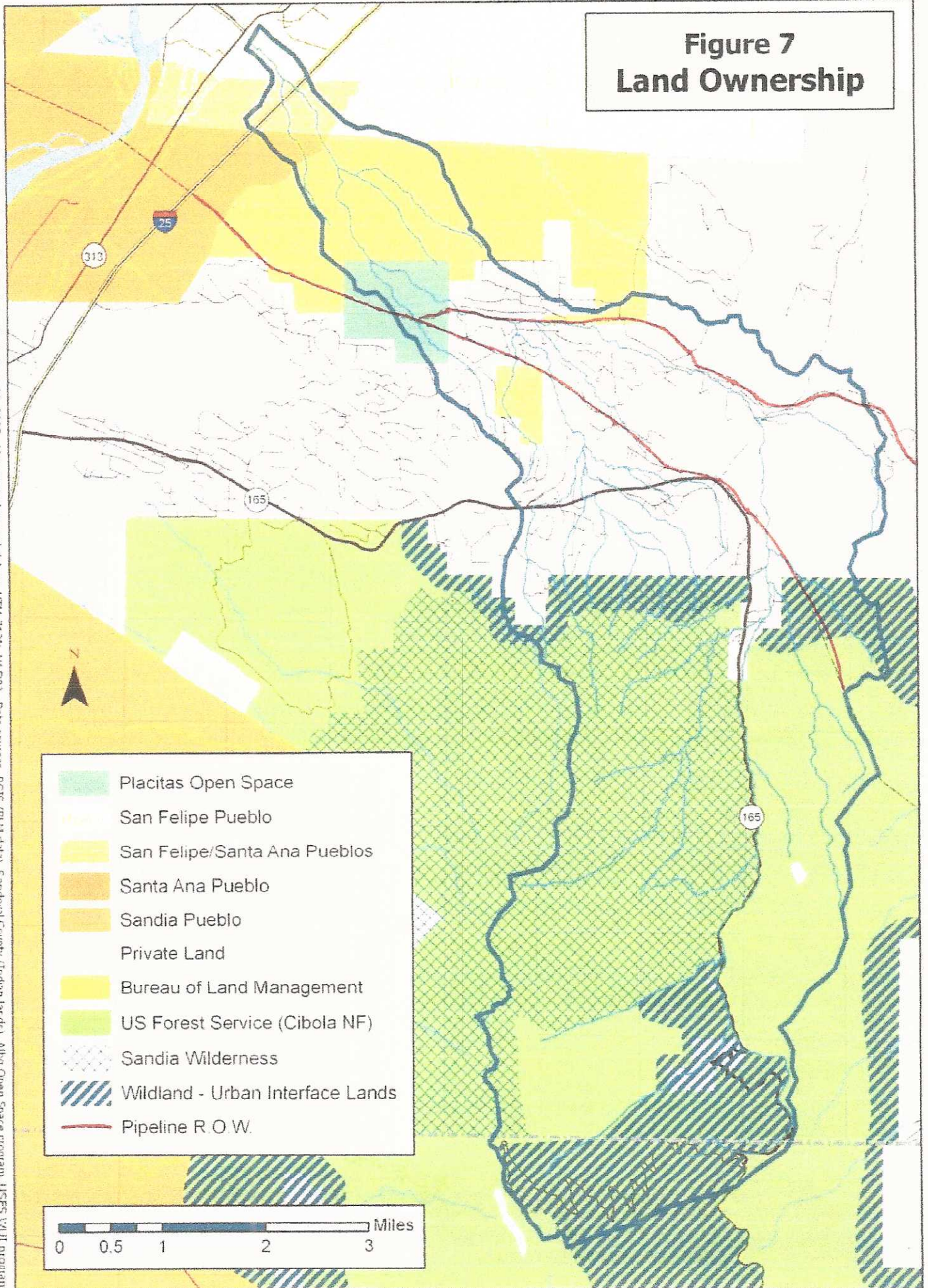
<http://www.enterpriseproducts.com/pipeline-safety/pipeline-viewer>

Pipeline and Hazardous Materials Safety Administration (PHMSA):

<https://www.npms.phmsa.dot.gov/>



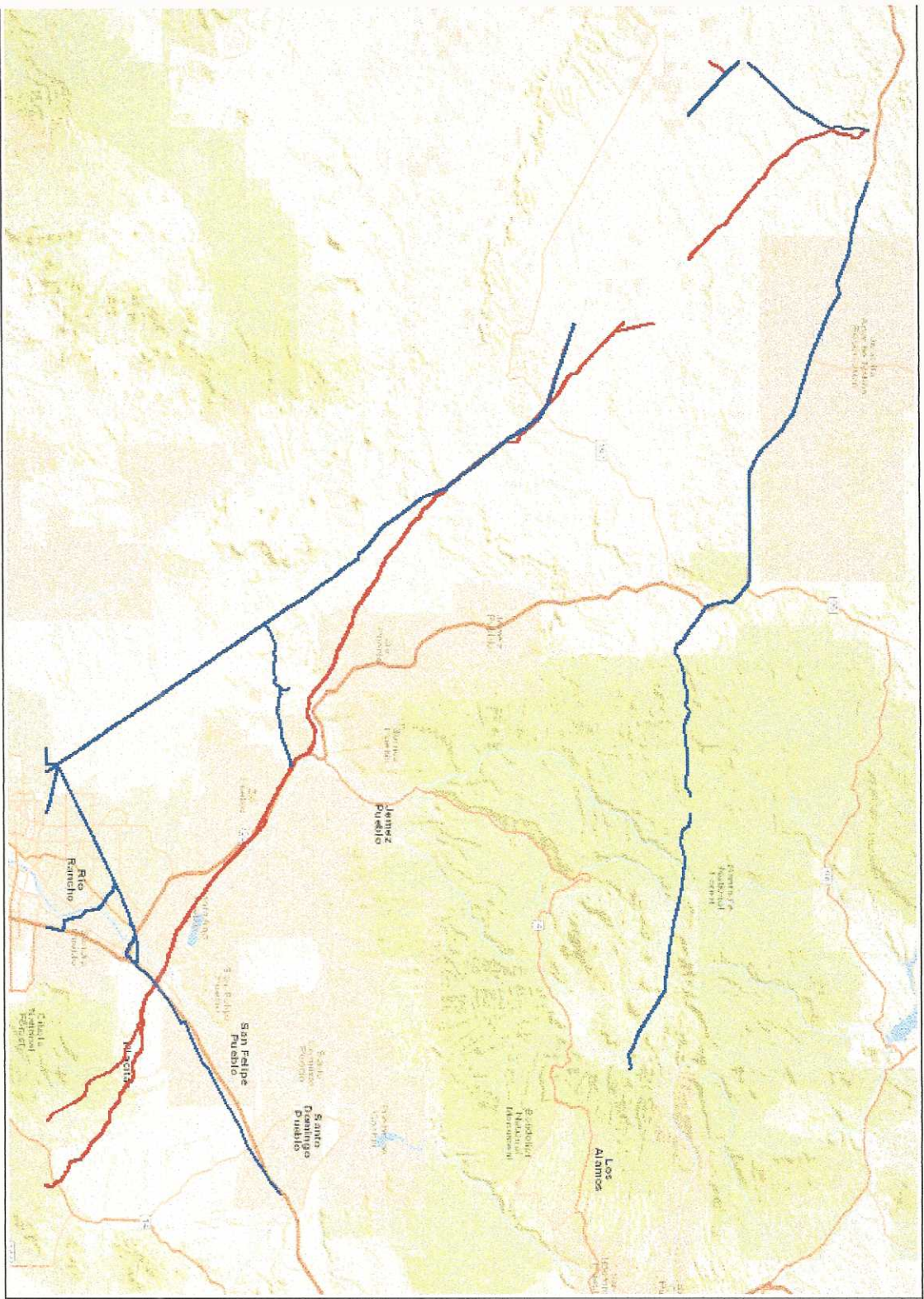
**Figure 7  
Land Ownership**



Map by Kristin Willette for Las Placitas Association June 22, 2005. Map projection and datum: UTM 12N, NAD83. Data sources: RGIS (BLM data), Sandoval County (Indian lands), Albuquerque Open Space program, USFS WUI program.



# NATIONAL PIPELINE MAPPING SYSTEM



## Legend

- Gas Transmission Pipelines
- Hazardous Liquid Pipelines

0 5.0 Miles

Pipelines depicted on this map represent gas transmission and hazardous liquid lines only. Gas gathering and gas distribution systems are not represented.

This map should never be used as a substitute for contacting a one-call center prior to excavation activities. Please call 811 before any digging occurs.

Questions regarding this map or its contents can be directed to [npmis-rr@mbaikercorp.com](mailto:npmis-rr@mbaikercorp.com).

Projection: Geographic

Datum: NAD83

Map produced by the NPWS Public Viewer at [www.npms.phmsa.dot.gov](http://www.npms.phmsa.dot.gov)

Date Printed: Jun 27, 2016

